

Some of the common methods and areas to catch fish in Don Pedro Lake are:

### **Trout**

Trolling using lures such as needlefish, rapalas, castmasters, or nightcrawlers in the Jenkins Hill area, near the dam, Middle Bay, Woods Creek, or the Tuolumne River Arm of the lake.

### **Bass**

Use worms, jigs, spinnerbaits, crankbaits or swimbaits in the coves and off rocky points.

### **Kokanee Salmon**

Troll spoons, bugs and other lures tipped with white corn in the Middle Bay area and Jenkins Hill area.

### **King and Silver Salmon**

Troll anchovies, shad, or lures near the dam, Middle Bay, Woods Creek or the Tuolumne River arm of the lake.

### **Crappie**

Use small jigs and minnows around brush or submerged structure in the Woods Creek area, Rogers Creek area and around the marinas.

### **Catfish**

Use chicken livers, anchovies, night crawlers, mackerel or sardines in the warm coves or near the dam.

### **Bluegill and Sunfish**

Use redworms around brush or submerged structure.

## **FISHING REGULATIONS CHANGE ANNUALLY. REGULATIONS SPECIFIC TO DON PEDRO LAKE: YOU MUST HAVE A CALIFORNIA FISHING LICENSE.**

**TROUT AND SALMON:** OPEN SEASON ALL YEAR. LIMIT: FIVE

**BASS:** OPEN SEASON ALL YEAR. LIMIT FIVE BASS. MINIMUM LENGTH: TWELVE INCHES

**CATFISH:** OPEN SEASON ALL YEAR. LIMIT TWENTY (EXCEPT BULLHEADS NO LIMIT)

**CRAPPIE:** OPEN SEASON ALL YEAR. LIMIT: TWENTY FIVE

**OTHER SPECIES:** OTHER SPECIES OF FISH MAY BE TAKEN IN ANY NUMBER AND AT ANY TIME OF THE YEAR BY ANGLING

**CHECK THE CALIFORNIA DFG SPORT FISHING REGULATIONS FOR CURRENT CHANGES. (WWW.DFG.CA.GOV)**

---

There are many species of warm and coldwater game fish in Lake Don Pedro including; Largemouth bass, Spotted bass, Smallmouth bass, Rainbow Trout, Brown Trout,, Brook Trout, King Salmon, Silver Salmon, Kokanee Salmon, Black Crappie, White Crappie, Channel Catfish, White Catfish, Black Bullhead Catfish, Green Sunfish and Bluegill perch. Other species of fish in the lake are Carp, Sacramento Pike Minnow (Squawfish), Whitefish, Sacramento Sucker and Threadfin Shad.

The Don Pedro Recreation Agency has been stocking Florida Strain Largemouth Bass in the lake on an annual basis since the early 1980s. The California Department of Fish and Game plant trout annually and have planted salmon in coordination with non-profit salmon organizations such as Kokanee Power.

## *Fishing At Don Pedro Lake*



*Photo courtesy of Danny Gillespie*

*dannysbassfishin@yahoo.com*

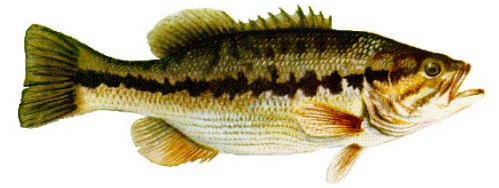
Largemouth Bass



King Salmon



Spotted Bass



Rainbow Trout



Silver Salmon



Green Sunfish



Channel Catfish



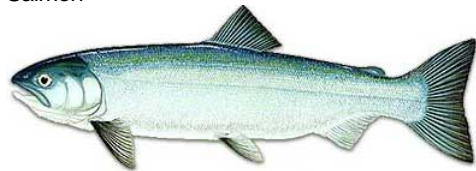
Brown Trout



Bluegill Perch



Kokanee Salmon



Brook Trout



White Catfish



Crappie



Smallmouth Bass



Whitefish

